

THE SCIENCE BEHIND SKIN ALLERGIES

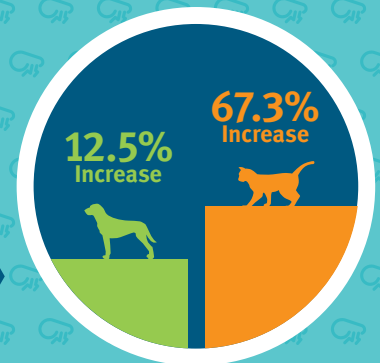
Banfield Pet Hospital's research team explored flea, food and environmental allergies in dogs and cats.



TINY BUGS. BIG PROBLEMS.

Fleas are the most common external parasite we see on our patients. They are prevalent throughout the U.S., and proteins in their saliva can cause an allergic reaction in some pets.

OVER THE PAST 10 YEARS, Banfield has seen a significant increase in flea allergy cases. The best solution: administering flea prevention year round.



FOOD ALLERGIES COME WITH BAGGAGE

Although food allergies affect a small percentage of the Banfield pet population, our research shows pets that have them are more likely to have skin infections. Testing may be necessary to reach a complete and correct diagnosis.



6x
more likely to
develop skin infections



15x
more likely to develop skin infections

ALLERGIES ARE ALWAYS IN SEASON

Over the past 10 years, we've seen a 30.7% increase in environmental allergy cases in dogs and an 11.5% increase in cats.

Allergens can vary by region and climate, but many common triggers can be found in the home.



Dust & Storage Mites



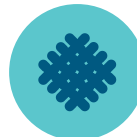
Pollen



Dander



Molds



Fabrics



Feathers



Medications



Cleaning Solutions



TEAMWORK IS KEY

Reaching a diagnosis can take time, and sometimes multiple tests or even a referral to a veterinary dermatologist are needed to identify the underlying cause(s).

Partnering with your veterinarian is the best thing you can do to get your pet more comfortable and get to the bottom of the skin condition.