

Vaccinations

Here's what you need to know about your pet's vaccinations.

Vaccinations help protect your pet against serious infectious diseases. They work by introducing dead or weakened germs to your pet's immune system, so their body is ready with a defense in case of future exposure.

What can I expect?

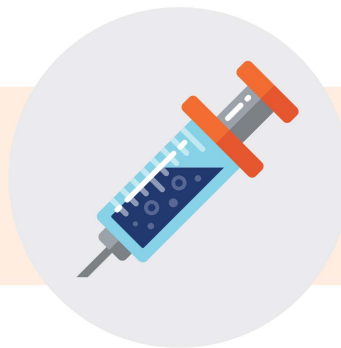
The vaccines we use are safe and effective.

Signs of a mild adverse reaction can include:

- Mild lethargy
- Muscular soreness, or a reluctance to walk or run
- Soreness at the injection site
- Decreased appetite
- Mild fever

- ▶ If your pet's reaction lasts longer than 24 hours, or if your pet does not improve, call your veterinary team immediately.

Some dogs may experience a mild upper respiratory reaction for 2 to 3 days after the intranasal "kennel cough" (*Bordetella*) vaccination. Contact your veterinary team if your pet is sneezing or has a runny nose.



What does a serious reaction look like?

Anaphylaxis is a rare and life-threatening reaction that requires immediate medical intervention.

Signs include:

- Swollen face or ears
- Hives or significant itching
- Difficulty breathing
- Extreme lethargy
- Significant vomiting or diarrhea
- Seizures
- Collapse
- Sudden death

If you see signs of anaphylaxis, take your pet back to your hospital or to your local after-hours emergency veterinary service **immediately**.



- ▶ Please alert your veterinary team if your pet has experienced vaccine reactions in the past.



How to help your pet

- Monitor your pet closely for several hours after vaccination
 - Call your veterinary hospital if your pet develops a mild vaccine reaction
 - If your pet shows signs of a serious anaphylactic reaction, rush them immediately to the nearest veterinary hospital
 - Need immediate advice? Ping Vet Chat™—included in all pet Optimum Wellness Plans®!
- ▶ Vaccines are a key component of preventive medicine, and are recommended for all healthy pets.

